

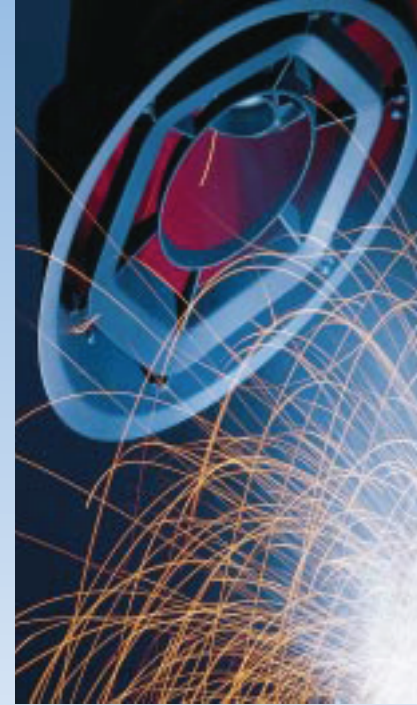
MOBIFLEX 100-NF PORTABLE FAN

The Mobiflex 100-NF is designed for use in confined spaces or where standard extraction equipment cannot reach. Such as pipe or assembled steel structures, in tanks or at excessive heights, etc.. The Mobiflex 100-NF portable fan can be combined with flexible extraction and exhaust hoses.



ADVANTAGE

- ? Motor power consumption 0,75 kW
- ? Motor speed 2800 rpm
- ? Unrestricted air flow 2400 m³/h
- ? Max. noise level 69 dB(A)
- ? Weight 17 kg
- ? Motor protection switch (MPS) (optional)



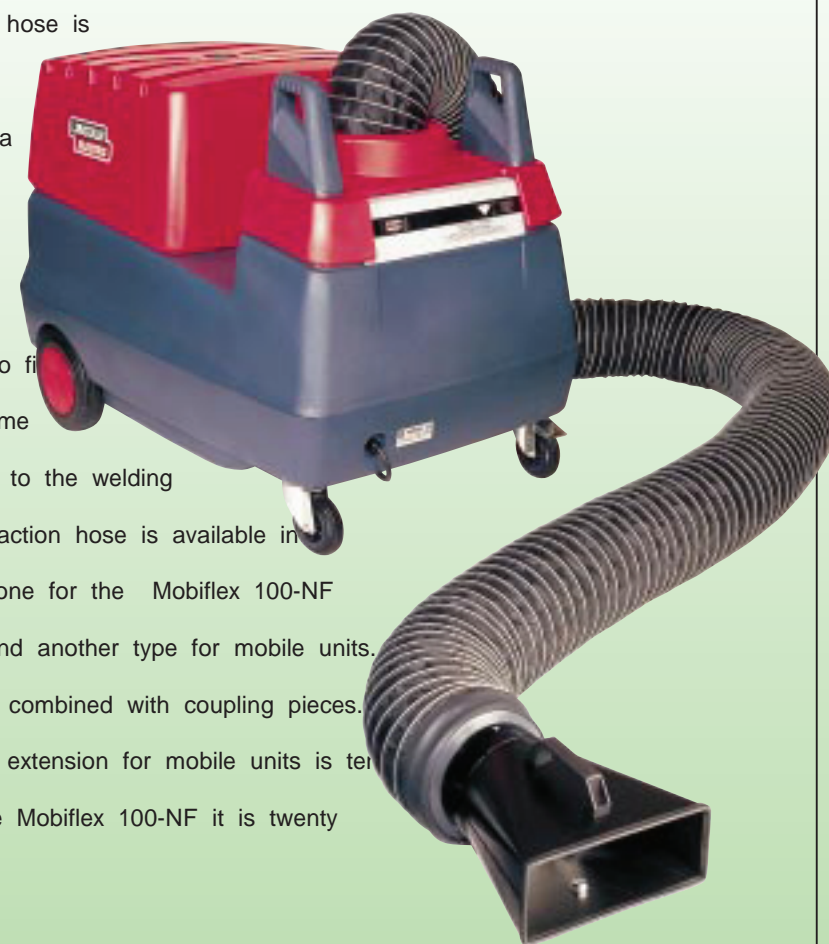
FLEXIBLE HOSES

This flexible hose is made of synthetic material and reinforced with an external metal spiral.

The extraction hose is equipped as standard with a suction nozzle, fitted with a magnetic foot.

This is used to fit the welding fume extractor close to the welding area. The extraction hose is available in two versions, one for the Mobiflex 100-NF portable fan and another type for mobile units. Hoses can be combined with coupling pieces.

The maximum extension for mobile units is ten metres, for the Mobiflex 100-NF it is twenty metres.



ADVANTAGE

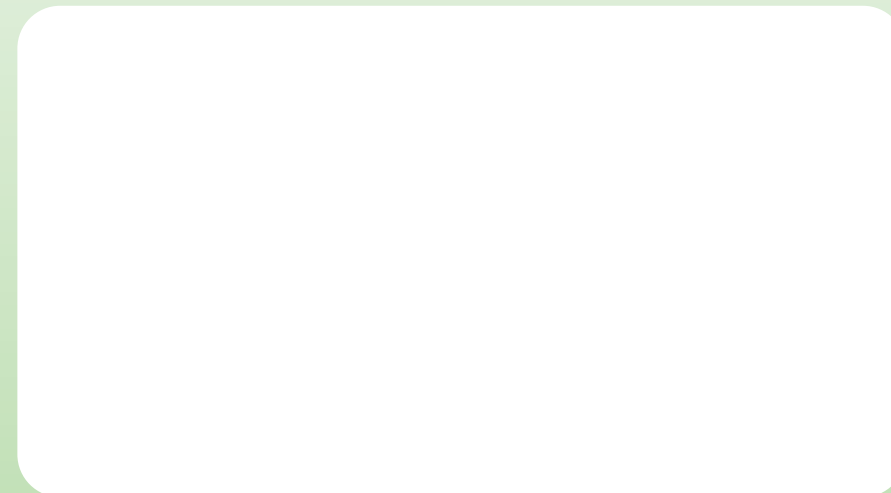
- ? Synthetic with external metal spiral reinforcement, wear resistant
- ? Actual hose diameter 203 mm for mobile units
- ? Actual hose diameter for Mobiflex 100-NF portable fan is 160 mm
- ? Length 5 meters

Extraction hose

- ? Extraction nozzle with magnetic foot
- ? Equipped with two hose clamps

Exhaust/extension hose

- ? Coupling piece with hose clamp
- ? Maximum hose length on mobile units is 10 meters, on Mobiflex 100-NF portable fan it is 20 meters



LINCOLN
ELECTRIC

www.lincolnweld.ru

LINCOLN ENVIRONMENTAL SYSTEM



The extraction of welding fumes can cause the loss of expensively heated air. In order to avoid this, the Pro Source mobile welding fume extractors filter the contaminated air and recirculate it into the work area. Furthermore, these extractors increase welders flexibility through its ability to adapt to various work locations.

The complete range of Pro Source mobile welding fume extraction units can be combined with various filter systems and extraction arms. As a result of this, there is a suitable mobile welding fume extraction solution for every type of welding area.

MOBILE WELDING FUME EXTRACTORS



LINCOLN
ELECTRIC

FILTERING TECHNIQUES

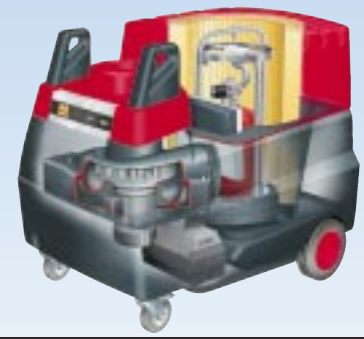
Mechanical filtering technique

The Lincoln Pro Source LongLife® filter has a filter surface of no less than 50 m². The combination of this with an ExtraCoat® treatment and the special 3D-pleated structure results in a high filter efficiency, a long life span and low operational costs. This system is suitable for dry welding fumes.



Self-cleaning filtering technique

The Lincoln Pro Source RotaPulse® concept is a fully automatic mechanism which cleans the filter sections periodically through air pulses from a pressure vessel. This results in a consistently high extraction capacity. Through the ExtraCoat® treatment of the filter and its 30 m² surface, this system has a highly efficient filter and a long life span. This system is suitable for dry welding fumes.



Electrostatic filtering technique

The electrostatic filter is made up of three sections: a mechanical pre filter, an ioniser where the polluted particles are charged and a collector with an effective surface area of 14.2 m². The collector is equipped with electrically charged plates which attract the polluted particles. The purified air is re-circulated via an after filter. The system is particularly suitable for the extraction of welding fumes released during the processing of oil treated steel.



MOBIFLEX 200-M MECHANICAL FILTER

As all other mobile welding fume extractors, the Mobiflex 200-M is built the Lincoln way, rugged and reliable.

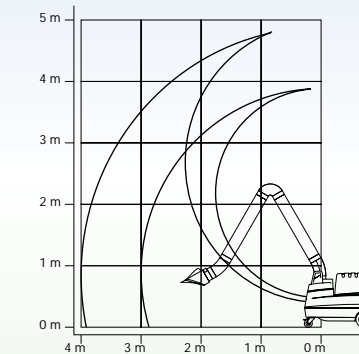
The heart of the unit is the LongLife® filter with metal spark arrester. The combination of the filter surface (50 m²), the ExtraCoat® treatment and 3-D pleating, makes the dust collection capacity of this filter enormous.

The Mobiflex 200-M can be combined with the extraction arms LFA 3.0 / 3.1 / 4.0 and 4.1. It is designed for infrequent to regular welding operations at various work locations, whereby dry welding fumes are released.

A clogged filter indicator shows whether the extraction is still satisfactory or whether the filter needs to be replaced.



Reach of the Mobiflex 200-M



The Mobiflex 400-MS is based on the fully automatic RotaPulse® concept.

The cleaning of the filter, segment by segment, with compressed air results in a constantly high airflow.

The residue is collected in a drawer which can be removed by the operator avoiding contact with the contaminant. RotaPulse® operates with compressed air and the unit is equipped accordingly with an external connection as standard.

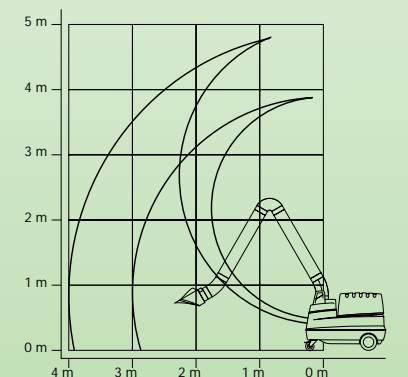
The Mobiflex 400-MS is also available with a built-in compressor so that the unit can be used anywhere.

The Mobiflex 400-MS is designed for intensive welding operations at various work locations, where dry welding fumes are released.

It can be combined with the extraction arms LFA 3.0 / 3.1 / 4.0 and 4.1.



Reach of the Mobiflex 400-MS



ADVANTAGE

- ✓ RotaPulse® automatic filter cleaning
- ✓ Cartridge filter with ExtraCoat® treatment
- ✓ Filter surface area 30 m²
- ✓ Filter efficiency up to 99.8%
- ✓ Motor power consumption 0.75 kW
- ✓ Motor speed 2800 rpm
- ✓ Net extraction capacity 1250 m³/h
- ✓ Max. noise level 69 dB(A)
- ✓ Aluminium spark arrester
- ✓ Compressed air connection 4-5 bar
- ✓ Available with built-in compressor (optional)
- ✓ Suitable for LFA 3.0 / 3.1 / 4.0 / 4.1 extraction arms or flexible hoses, maximum 10 meters long, diameter 200 mm
- ✓ Dimensions without extraction arm 1210 x 810 x 1020 mm
- ✓ Weight 130 kg
- ✓ Mobiflex 400-MS/C: 3 phases + N
- ✓ Working light and hood switch, or working light and automatic start/stop switching (optional)

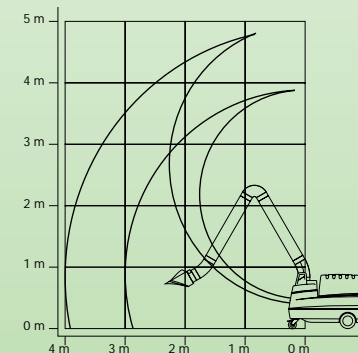
MOBIFLEX 300-E ELECTROSTATIC FILTER

The electrostatic filter system has proven its reliability and efficiency over the years. The open filter structure ensures a constant suction level and because of regular maintenance, the efficiency of the filter remains high. The convenient slide system enables you to remove and insert the filters quickly and easily. The Mobiflex 300-E is eminently suitable for the extraction of welding fumes originating from oil treated steel.

ADVANTAGE

- ✓ Electrostatic filter system, easy clean
- ✓ Collector surface area 14.2 m²
- ✓ Filter efficiency up to 99%
- ✓ Motor power consumption 0.75 kW
- ✓ Motor speed 2800 rpm
- ✓ Net extraction capacity 1300 m³/h
- ✓ Max. noise level 69 dB(A)
- ✓ Aluminium spark arrester
- ✓ High voltage indicator light
- ✓ Suitable for LFA 3.0 / 3.1 / 4.0 / 4.1 extraction arms or flexible hoses, maximum 10 m. long, Ø 200 mm
- ✓ Dimension without extraction arm 1210 x 810 x 900 mm
- ✓ Weight 145 kg
- ✓ Working light and hood switch, or working light and automatic start/stop switching (optional)
- ✓ Activated carbon filter (optional)

Reach of the Mobiflex 300-E



ADVANTAGE

- ✓ LongLife® filter with ExtraCoat® treatment
- ✓ Filter surface area 50 m²
- ✓ Filter efficiency up to 99.8%
- ✓ Motor power consumption 0.75 kW
- ✓ Motor speed 2800 rpm
- ✓ Net extraction capacity 1250 m³/h
- ✓ Max. noise level 69 dB(A)
- ✓ Aluminium spark arrester
- ✓ Clogged filter indicator
- ✓ Suitable for LFA 3.0 / 3.1 / 4.0 / 4.1 extraction arms or flexible hoses, maximum 10 meters long, diameter 200 mm
- ✓ Dimension without extraction arm 1210 x 810 x 900 mm
- ✓ Weight 108 kg
- ✓ Working light and hood switch, or working light and automatic start/stop switching (optional)
- ✓ Activated carbon filter (optional)