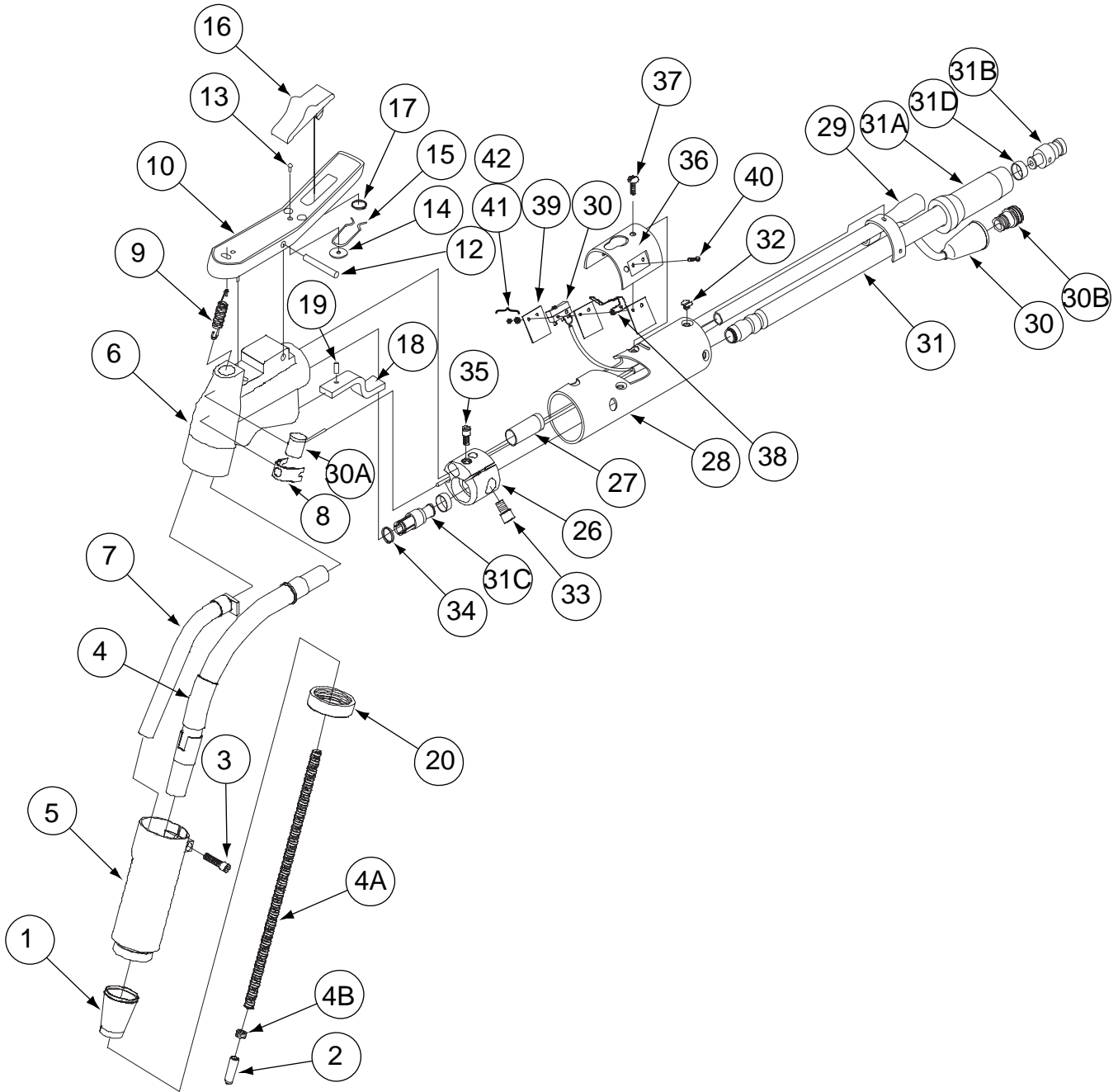


# K114 Squirtgun & Cable



Index of Guns

# Indicates a change this printing.

Use only the parts marked "x" in the column under the heading number called for in the model index page.

ITEM	DESCRIPTION	PART NO.	QTY.	1	2	3	4	5	6	7	8	9
	Squirtgun & Cable	K114										
1	Nozzle Flux Cone 13/16" Opening (Opt)(S12957-13/16)	KP1968-2	1	X								
1	Nozzle Flux Cone 5/8" Opening (Std) (S12957-5/8)	KP1968-5	1	X								
1	Nozzle Flux Cone 3/4" Opening (Opt) (S12957-3/4)	KP1968-4	1	X								
1	Nozzle Flux Cone 15/16" Opening (Opt)(S12957-15/16)	KP1968-3	1	X								
2	Contact Tip (T12236-3/32)	KP2088-2	As Req'd	X								
2	Contact Tip (Optional) (T12236-5/64)	KP2088-3	1	X								
	Gun Assembly, Includes: (Items 3 thru 20)	L5757-A	1	X								
3	Socket Head Cap Screw	T9447-22	1	X								
4	Nozzle, Includes:	S13816	1	X								
4A	Nozzle Liner, Tight Wound Steel Spring	T12931-2	1	X								
4B	Liner Locking Screw	T12932-2	1	X								
5	Gun Tube	S13042	1	X								
6	Right & Left Gun Mount	L3828	1	X								
7	Flux Shut Off Assembly	S11686	1	X								
8	Receptacle Clamp	T11521	1	X								
9	Spring	T11514	1	X								
10	Lever	S11567-1	1	X								
12	Pivot Pin	T11546	1	X								
13	Rivet	T10167-1	1	X								
14	Plain Washer	S9262-39	1	x								
15	Spring Clip	S11685	1	X								
16	Trigger	S11569	1	X								
17	Snap Ring	S9776-16	1	X								
18	Gun Hanger	T11523	1	X								
19	Roll Pin	T9967-23	1	X								
20	Collar	S12964-1	1	X								
	Handle & Conductor Cable Asbly, Includes: (Items 26 thru 42)	L5757-B										
26	Clamping Ring	S12903	1	X								
27	Tube Insulator	T11584	1	X								
28	Handle	S11629	1	X								
29	Flux Tube	S11822	1	X								
30	Control Cable, Includes:	M9473	1	X								
	Micro Switch	S12182-1	1	X								
30A	3 Contact Receptacle, Gun End	T11155-1	1	X								
30B	5 Contact Receptacle, Wire End	S12020-6	1	X								
31	Conductor Cable, Includes:	L5728-6	1	X								
31A	Handle & Stiffener, Wire Feeder End	M14048	1	X								
31B	Connector, Wire Feeder End	S12801-6	1	X								
31C	Connector, Gun End	S12802-14	1	X								
31D	Clamping Tube, Both Ends	S7748-40	2	X								
32	#8-32 x 1.875 FHS	CF000133	2	X								
33	Socket Head Screw	T9447-8	1	X								
34	Snap Ring	S9776-28	1	X								
35	Socket Head Screw	T9447-21	1	X								
36	Switch Mounting Plate	S11588	1	X								
37	#8-32 x .50 RHS	CF000033	3	X								
38	Actuator	T11527	1	X								
39	Insulation	T11522	3	X								
40	#2-56 x .4375 RHS	CF000135	2	X								



# Indicates a change this printing.

Use only the parts marked "x" in the column under the heading number called for in the model index page.

ITEM	DESCRIPTION	PART NO.	QTY.	1	2	3	4	5	6	7	8	9
41	Lock Washer	T9695-10	2	X								
42	#2-56 HN	CF000136	2	X								
	Nozzle Extension, 2-1/4" Stickout, (Not Shown)	S12891-1	1	X								
	Housing	S13028-1	1	X								
	Insert	T12329-1	1	X								
	Tip	T12328-3/32	1	X								
	Nozzle Extension, 3-1/4" Stickout, (Not Shown)	S12891-2 $\emptyset$	1	X								
	Housing	S13028-2	1	X								
	Insert	T12329-2 $\emptyset$	1	X								
	Tip	T12328-3/32	1	X								
	Adapter Kit to use Squirtgun K114 w/MN-1 & ML-3 (Not Shown)	M16082	1	X								
	Adapter Kit to use Squirtgun K114 w/ML-2 (Not Shown)	S12967 $\emptyset$	1	X								



# NOTES

---

K114 SQUIRTGUN & CABLE

